

**Anti-TPH1/Tph Rabbit Monoclonal Antibody**  
**Catalog # ABO13392****Specification**

---

**Anti-TPH1/Tph Rabbit Monoclonal Antibody - Product Information**

Application	WB, IHC, IP
Primary Accession	<a href="#">P17752</a>
Host	Rabbit
Isotype	Rabbit IgG
Reactivity	Rat, Human, Mouse
Clonality	Monoclonal
Format	Liquid

**Description**

Anti-TPH1/Tph Rabbit Monoclonal Antibody . Tested in WB, IHC, IP applications. This antibody reacts with Human, Mouse, Rat.

**Anti-TPH1/Tph Rabbit Monoclonal Antibody - Additional Information**

**Gene ID** 7166

**Other Names**

Tryptophan 5-hydroxylase 1, 1.14.16.4, Tryptophan 5-monooxygenase 1, TPH1, TPH, TPRH, TRPH

**Calculated MW**

50985 MW KDa

**Application Details**

WB 1:500-1:2000<br>IHC 1:50-1:200<br>IP 1:50

**Tissue Specificity**

Isoform 2 seems to be less widely expressed than isoform 1.

**Contents**

Rabbit IgG in phosphate buffered saline, pH 7.4, 150mM NaCl, 0.02% sodium azide and 50% glycerol, 0.4-0.5mg/ml BSA.

**Immunogen**

A synthesized peptide derived from human TPH1

**Purification**

Affinity-chromatography

**Storage**

**Store at -20°C for one year. For short term storage and frequent use, store at 4°C for up to one month. Avoid repeated freeze-thaw cycles.**

**Anti-TPH1/Tph Rabbit Monoclonal Antibody - Protein Information**

**Name** TPH1

**Synonyms** TPH, TPRH, TRPH

**Function**

Oxidizes L-tryptophan to 5-hydroxy-L-tryptophan in the rate- determining step of serotonin biosynthesis.

**Tissue Location**

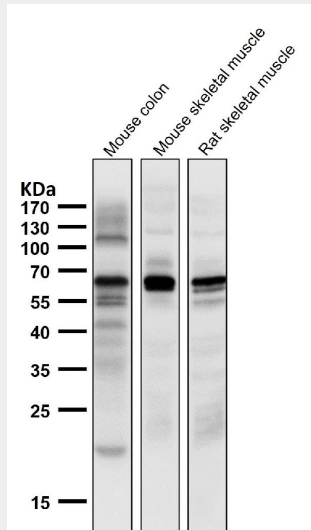
[Isoform 2]: Seems to be less widely expressed than isoform 1.

**Anti-TPH1/Tph Rabbit Monoclonal Antibody - Protocols**

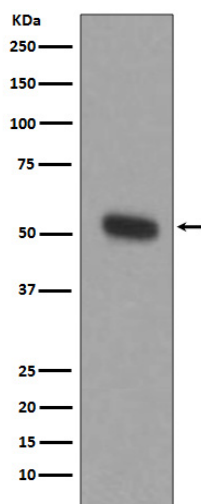
Provided below are standard protocols that you may find useful for product applications.

- [Western Blot](#)
- [Blocking Peptides](#)
- [Dot Blot](#)
- [Immunohistochemistry](#)
- [Immunofluorescence](#)
- [Immunoprecipitation](#)
- [Flow Cytometry](#)
- [Cell Culture](#)

**Anti-TPH1/Tph Rabbit Monoclonal Antibody - Images**



All lanes use the Antibody at 1:1K dilution for 1 hour at room temperature.



Western blot analysis of TPH1 expression in THP-1 cell lysate.